



# South Yorkshire and Bassetlaw: An Integrated Care System

April 2019



# A leading Integrated Care System

1.5m  
people

36  
neighbourhoods

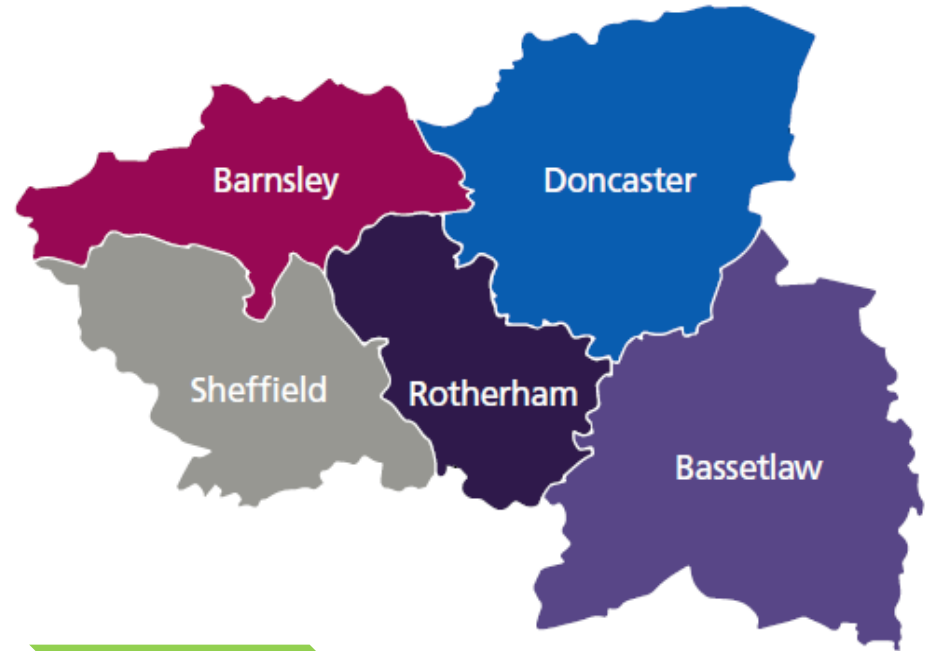
5  
Places, CCGs and  
Local Authorities

6  
Acute  
hospitals

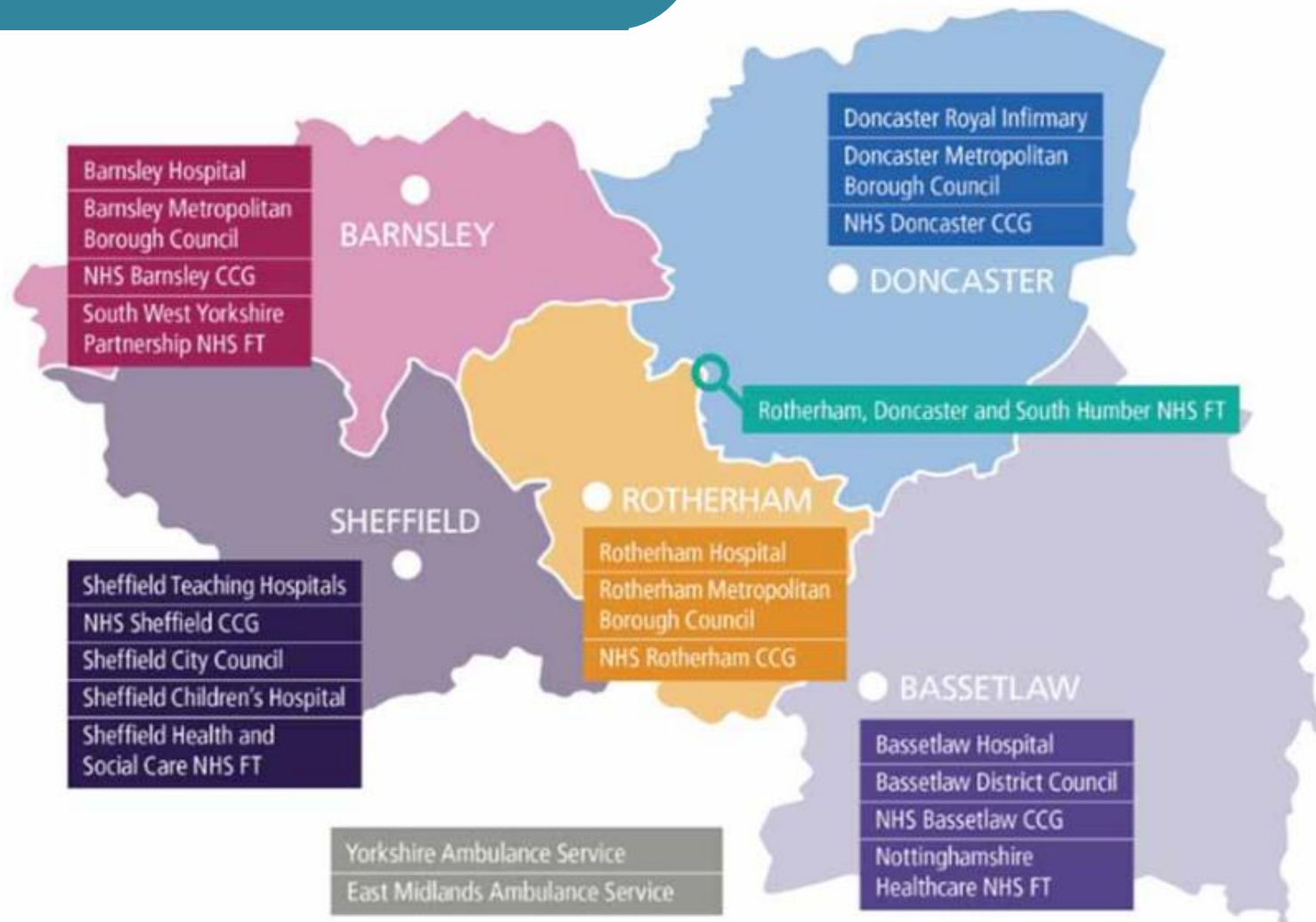
23  
partners

4  
Care/mental  
health trusts

208  
GP  
practices



# Our partnership



**Working together at different levels:** The majority of our work will take place locally, in our neighbourhoods. Only when improvements can be made across a wider scale, will services or projects be planned at a regional, or ICS, level.



We have **36 neighbourhoods** with populations of **30 - 50k**. At this level, primary care will be strengthened by working together in networks.



We have **five places** with populations between **250-500k**. At this town/city/council level, health and care will work together more closely.



We have **one system** with a population of **1.5m**. At this level, strategic planning and improvements can take place for the benefit of all as well as having an overview of system finance and performance.



**Our ambition is simple:** We want everyone in South Yorkshire and Bassetlaw to have a great start in life with support to live well, for longer.



We will join up health and care



We will use the best technology



We will develop our workforce



We will care for the whole person, mentally and physically



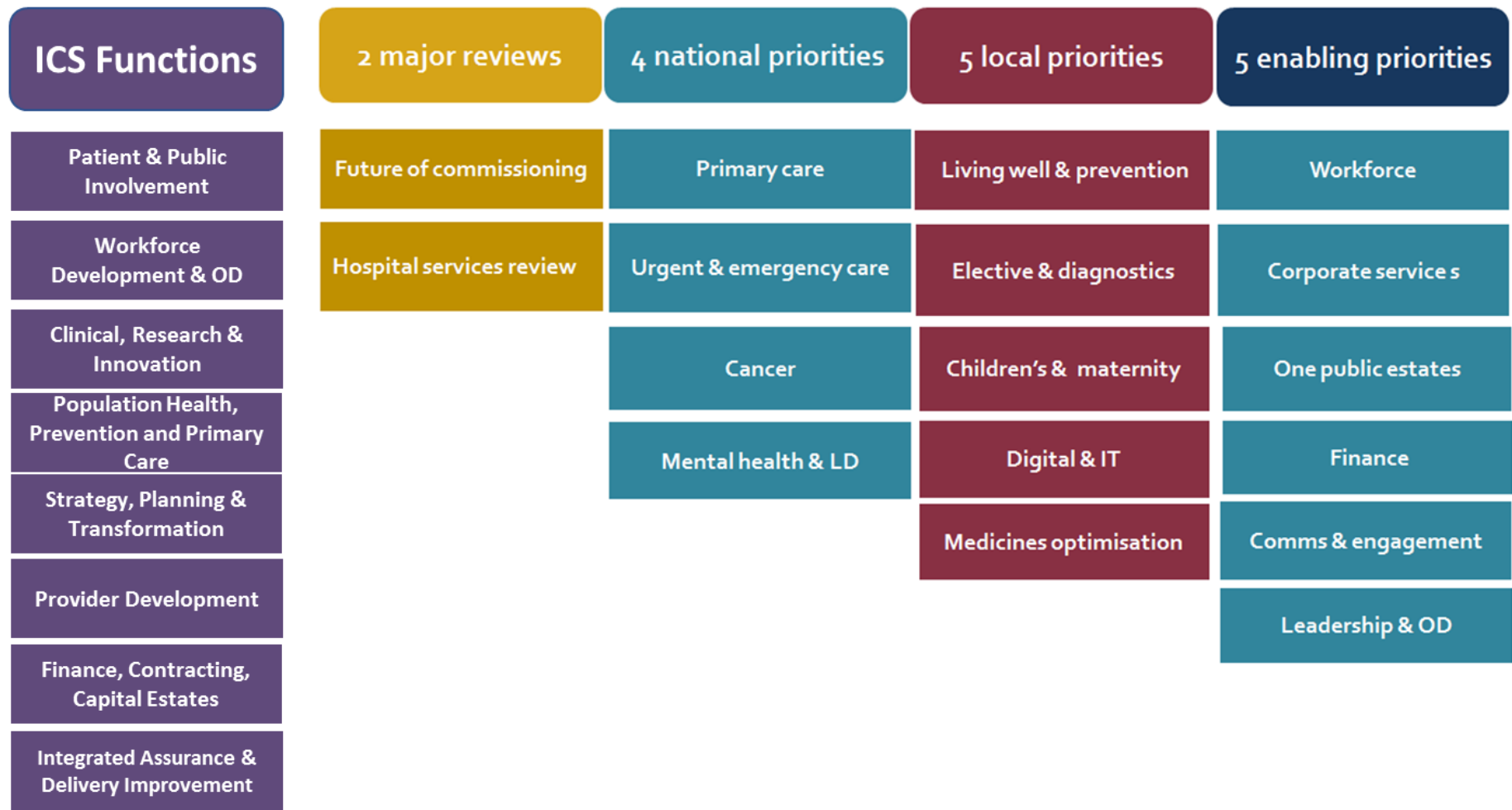
We will invest in primary care while improving access to secondary and specialist services



We will engage with our staff, patients and communities

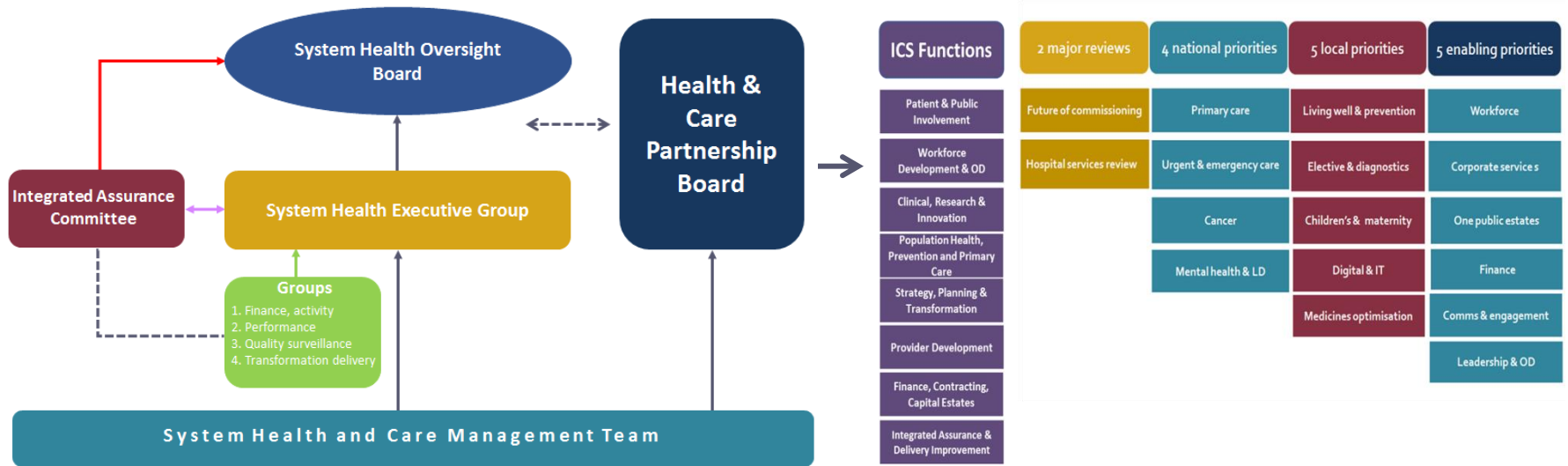


# Key work so far

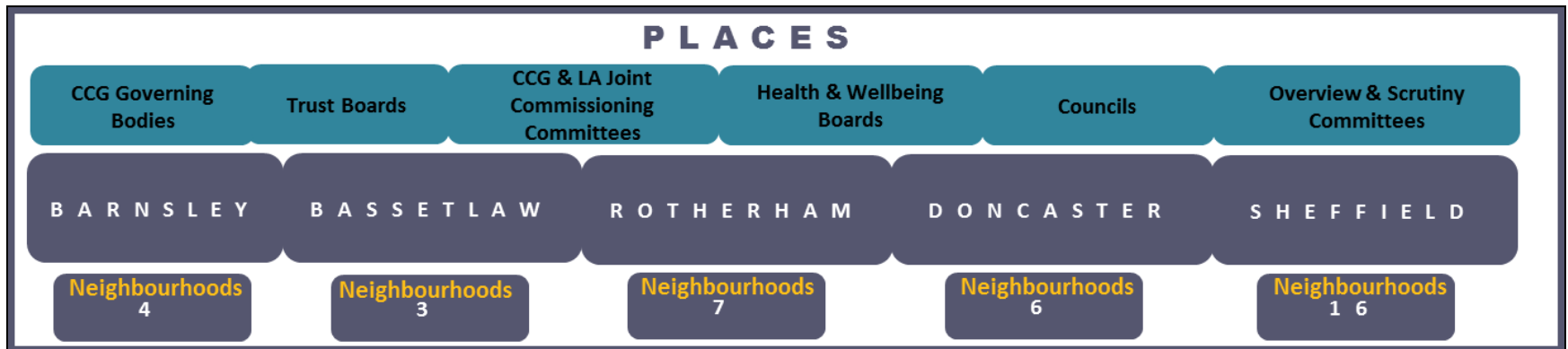


# Ways of working

## Regulators, ALBs, Collaborative forums



## PLACES







£4m supported more people to stay well



0.5m towards employing more diabetes nurse specialists



Over a **third** (nearly £13m) went to neighbourhoods and communities




**30m**

of additional funding from NHS England in 2018/19



£9m provided extra support to hospital care



>0.5m is helping to prevent suicides



£2m supported the earlier diagnosis of cancer





# Since becoming an ICS ...



**569** MILLION REASONS

Over 14,000 people shared their views on purchasing over the counter medicines.



@SYBhealthcare



Over 2500 people with long term physical or mental health problems are being supported to find or stay in employment.



Video case studies highlight our new ways of working:  
[www.youtube.com/SYBintegratedcaresystem](http://www.youtube.com/SYBintegratedcaresystem)



We have created a Travel and Transport Group to advise on the impacts of service transformation



Our Citizens' Panel celebrated its' first birthday in January 2019 and we have face to face conversations with around 100 members of the public every month

**Top media Tweet** earned 1,337 Impressions

Did you know the AHP workforce is our third largest staff group? We held our first AHP Council last month with nominated reps coming together to see how the thousands of highly qualified and dedicated AHPs can better support our health and care services to deliver the best care

[pic.twitter.com/pSeXXs0Q2o](https://pic.twitter.com/pSeXXs0Q2o)



1 6 14





0114 305 4487

[helloworkingtogether@nhs.net](mailto:helloworkingtogether@nhs.net)

[www.healthandcaretogethersyb.co.uk](http://www.healthandcaretogethersyb.co.uk)

Thank you

